

# WeedMap

**WeedMap** is a Windows based software product configured for Pen Notebook PCs to facilitate field mapping of weeds.

This one product provides the user with the flexibility for either on-site or office processing of data, and allows combination of both options with a facility to readily transfer data between fixed and mobile PC. Optional peripheral inputs such as GPS and laser measuring devices can be incorporated to enable optimum productivity.



Property records are imported from the central Council database, with only selected records transferred to the PC.



A regional subset of the NSW Agriculture weeds list is transferred to the PC, providing the user with graphical confirmation of the target weed.



NSW Agriculture recommendations of eradication methods for the selected weed type are made available, giving guidance to the Field Officer.



The Inspection Report includes a comprehensive list of property, infestation details and comments. It also includes a mapping facility to allow Inspectors to map data in real world coordinates.



Scheduling facility allows the user to optimise inspection and travel activities to improve overall productivity. Reinspections automatically link to the previous report.



Chemical Application page for the purpose of tracking weed spraying, in terms of date/time, property, weather conditions, application method and chemicals used.



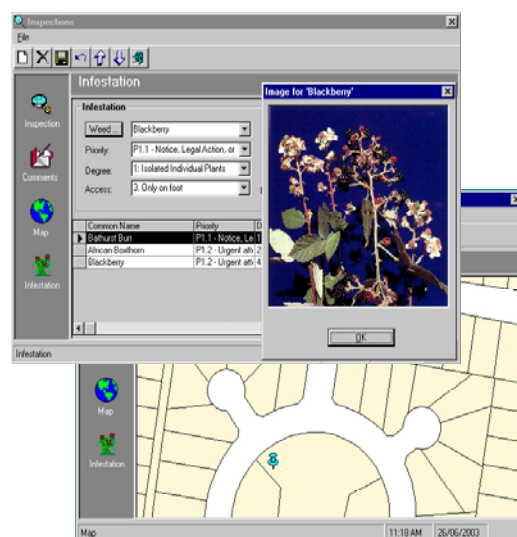
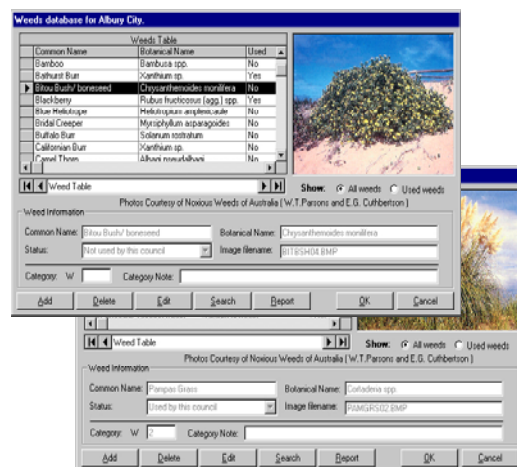
Reports, Notices and Letters are automatically generated from the data collected in the field via the Inspection Report. Partial forms are produced for those users without field PCs.



WeedMap is password protected to enable audit trails of all data changes, and to ensure information gathered is verifiable and secure.



As with most security based systems, WeedMap enables only the System Administrator to edit the Inspectors or Users database.



For further information please contact RapidMap on 03 9455 1699 (VIC) 02 9748 0038 (NSW) or [info@rapidmap.com.au](mailto:info@rapidmap.com.au)